

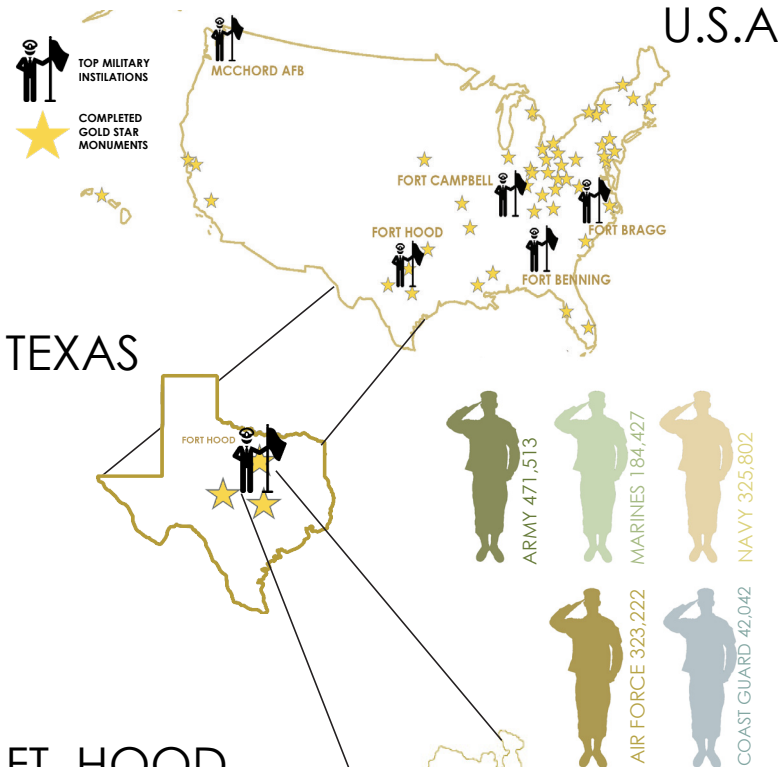
# GOLD STAR MEMORIAL

LAND 412  
SPRING 2019  
TEXAS A&M UNIVERSITY

MICHELLE DAVIS, LOGAN HUFFMAN, LAUREN RANDOLPH

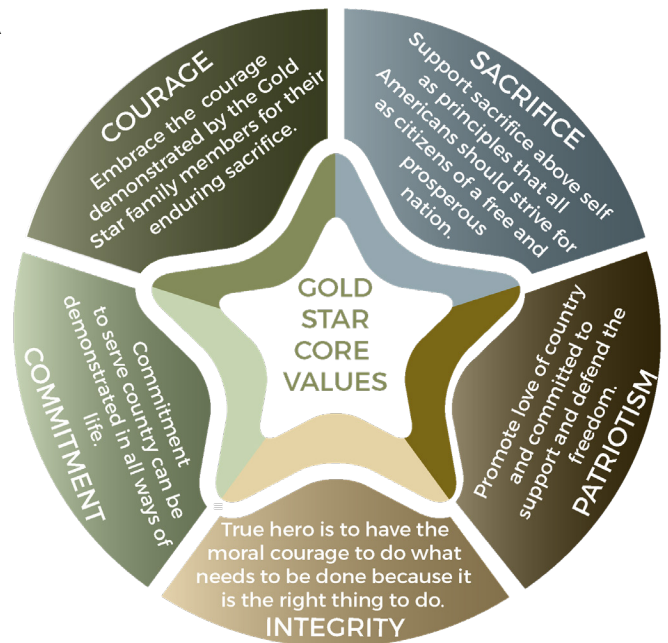
## H. WILLIAMS GOLD STAR MEMORIAL

A Gold Star Family is the immediate family members of a fallen service member who died while serving in a time of conflict. The purpose of the Gold Star Monument is to honor Gold Star Families, preserve the memory of the fallen, and stand as a stark reminder that Freedom is not free. This stunning black granite monument features two sides.



### FT. HOOD

1ST LARGEST MILITARY BASE  
AREA: 214,968 ACRES  
POPULATION: 217,003  
65,000 SOLDIERS & FAMILY MEMBERS  
CAPABLE OF STATIONING AND TRAINING 2 ARMORED DIVISIONS



## STAKEHOLDERS INFORMATION

FAMILIES	RESIDENTS	VISITORS
<ol style="list-style-type: none"> <li>1. WILL THERE BE ENOUGH SEATING?</li> <li>2. ACCURATELY REPRESENT THE BRANCHES OF ALL MILITARY.</li> </ol>	<ol style="list-style-type: none"> <li>1. WILL THERE BE AN AMERICAN FLAG?</li> <li>2. WILL IT BE APPARENT WHAT THE MEMORIAL IS FROM A DISTANCE?</li> </ol>	<ol style="list-style-type: none"> <li>1. HOW MANY OTHER GOLD STAR MEMORIALS ARE THERE?</li> <li>2. WILL THERE BE ENOUGH PARKING?</li> </ol>

1. EACH DESIGN WILL HAVE STRATEGIC SEATING ACCORDING TO THE LAYOUT.
2. AMPLE RESEARCH HAS BEEN DONE ON EACH MILITARY BRANCH WHEN USED IN A DESIGN.

1. IN ALL OF THE DESIGNS THERE WILL BE AN AMERICAN FLAG.
2. THERE WILL BE SIGNS OUTSIDE OF SOME DESIGNS THAT WILL INFORM WHAT THE MEMORIAL IS BEFORE ENTERING.

1. THERE ARE 47 CURRENT MONUMENTS AROUND THE U.S., AND 57 MORE ARE IN PROGRESS.
2. THERE ARE 30 AVAILABLE PARKING SPOTS AROUND CITY HALL WITH 2 BEING DESIGNATED FOR DISABLED PARKING.



# GOLD STAR MEMORIAL

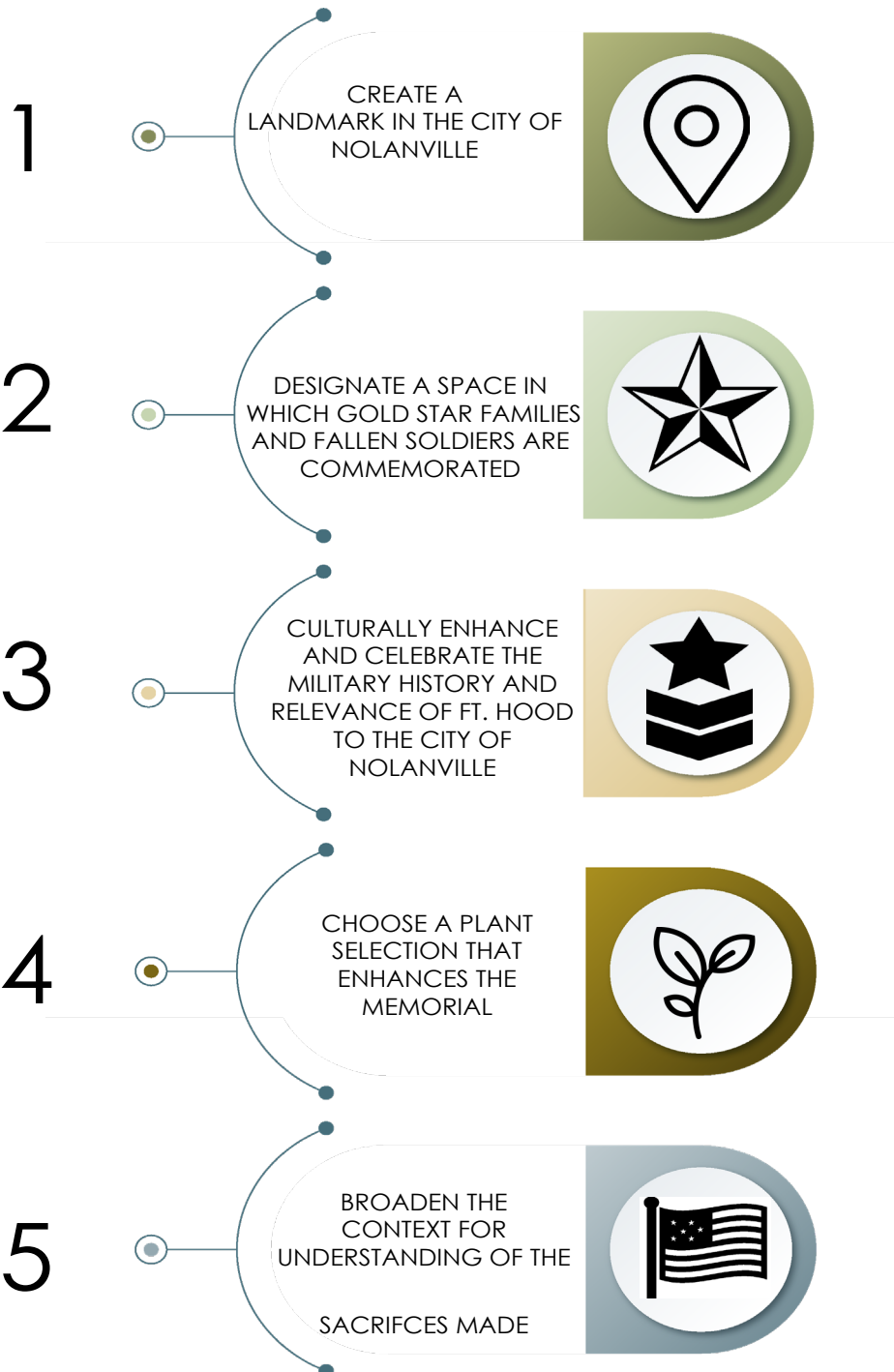
MICHELLE DAVIS, LOGAN HUFFMAN, LAUREN RANDOLPH

LAND 412  
SPRING 2019  
TEXAS A&M UNIVERSITY

## MISSION STATEMENT

The mission of the Gold Star memorial is to honor and provide a positive, meaningful, and peaceful environment to recognize the value of a loved one's life and their selfless sacrifice to the community. The memorial will create a space that additionally celebrates the presence that Ft. Hood plays in the lives of many Nolanville families.

## GOALS



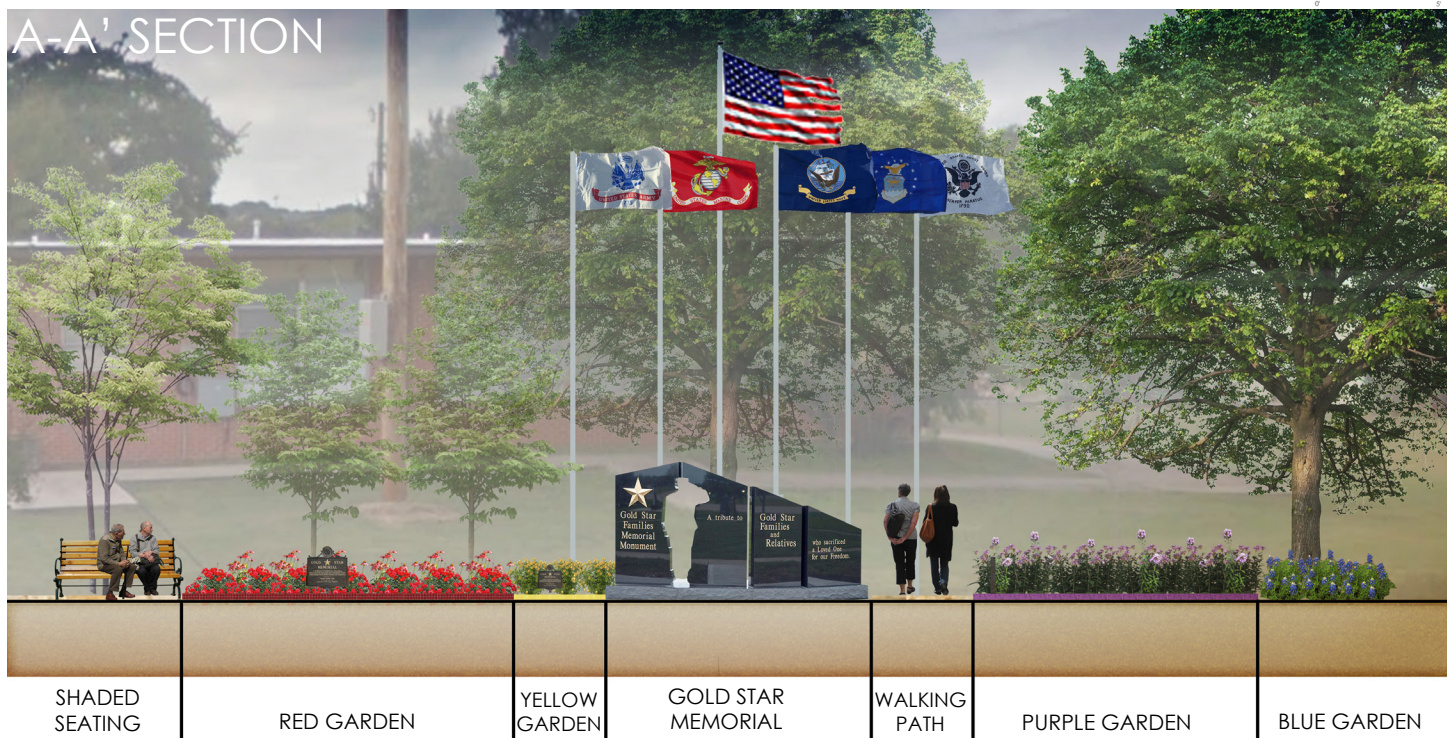
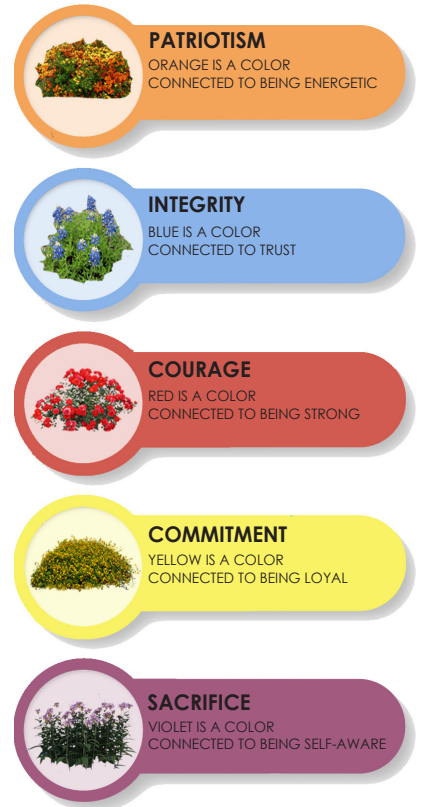
# GOLD STAR MEMORIAL

LAUREN RANDOLPH  
LAND 412 | SPRING 2019  
TEXAS A&M UNIVERSITY

The star shape of this design is symbolic of the Gold Star Memorial itself. The plant selection was made to signify what colors can mean and how they connect to the core values of Hersel Williams Memorial Foundation. The five branches of military are also represented with flags that honor Americans that are currently and in the past have served their country, while also showing the relation of Nolanville and Fort Hood.



## CORE VALUES



# GOLD STAR MEMORIAL

LAUREN RANDOLPH  
LAND 412 | SPRING 2019  
TEXAS A&M UNIVERSITY

ENTRANCE VIEW



MEMORIAL INTERIOR VIEW

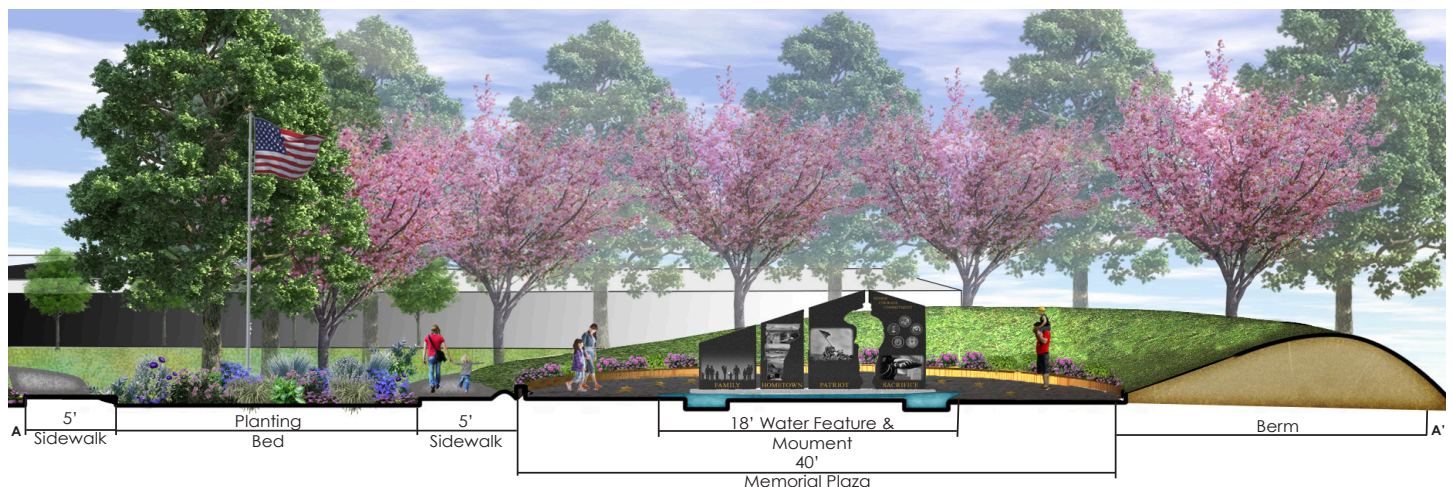
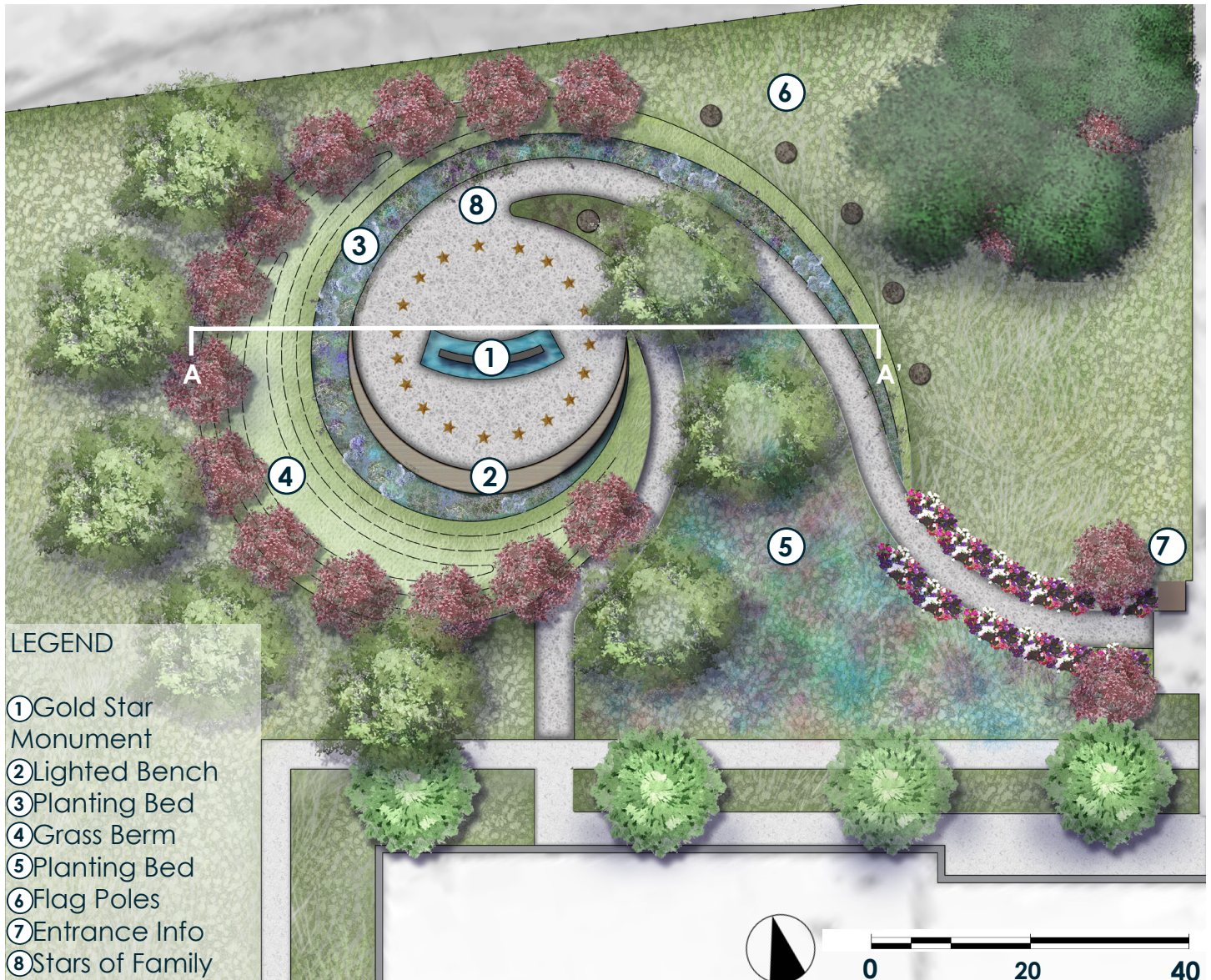


# GOLD STAR MEMORIAL

MICHELLE DAVIS  
 LAND 412 | SPRING 2019  
 TEXAS A&M UNIVERSITY

MICHELLE DAVIS

In order to honor and provide a positive, meaningful, and peaceful environment to recognize the value of a loved one's life an ambulatory walkway around the Gold Star Monument for reflection is developed. A berm separates the memorial from the chaos of the world, while the utilization of color therapy through plant selection creates a serene atmosphere for visitors.



# GOLD STAR MEMORIAL

MICHELLE DAVIS  
 LAND 412 | SPRING 2019  
 TEXAS A&M UNIVERSITY



## COLOR THERAPY

### GREEN

Peaceful, Restful,  
Gentle, Loyal

### BLUE

Tranquil, Calm,  
Harmonious

### PURPLE

Wisdom, Serenity,  
Spirituality,  
Deep Connection

### PINK

Loving, Compassion,  
Affection

- Texas Red Oak
- Bosque Elm
- Inland Sea Oats
- Blue Daze
- Rosemary
- Little Blue Stem
- Lililope
- Lavender Lantana
- Texas Sage
- Verbena
- Purple Fountain Grass
- Texas Redbud

## SPRING

## SUMMER

## FALL

## WINTER



# GOLD STAR MEMORIAL

LOGAN HUFFMAN  
LAND 412 | SPRING 2019  
TEXAS A&M UNIVERSITY

The Gold Star Memorial is a Nolanville landmark outside of Nolanville City Hall designated to honor Gold Star Families. This landmark recognizes those who have made the ultimate sacrifice in the defense of the United States. The memorial proudly displays five, black granite pillars in a soft entry fountain which represents all five branches of the United States Military. Proceeding to the Gold Star Monument itself is a procession of both Maple and Pitsche trees, in which each tree is dedicated to a specific service member of the local or state community who has lost their life in conflict. As the seasons change, the tree color change will boldly display yellow, orange, and red foliage to represent courage, hope, and love.

## GOLD STAR CORE VALUES

COURAGE



SACRIFICE



PATRIOTISM



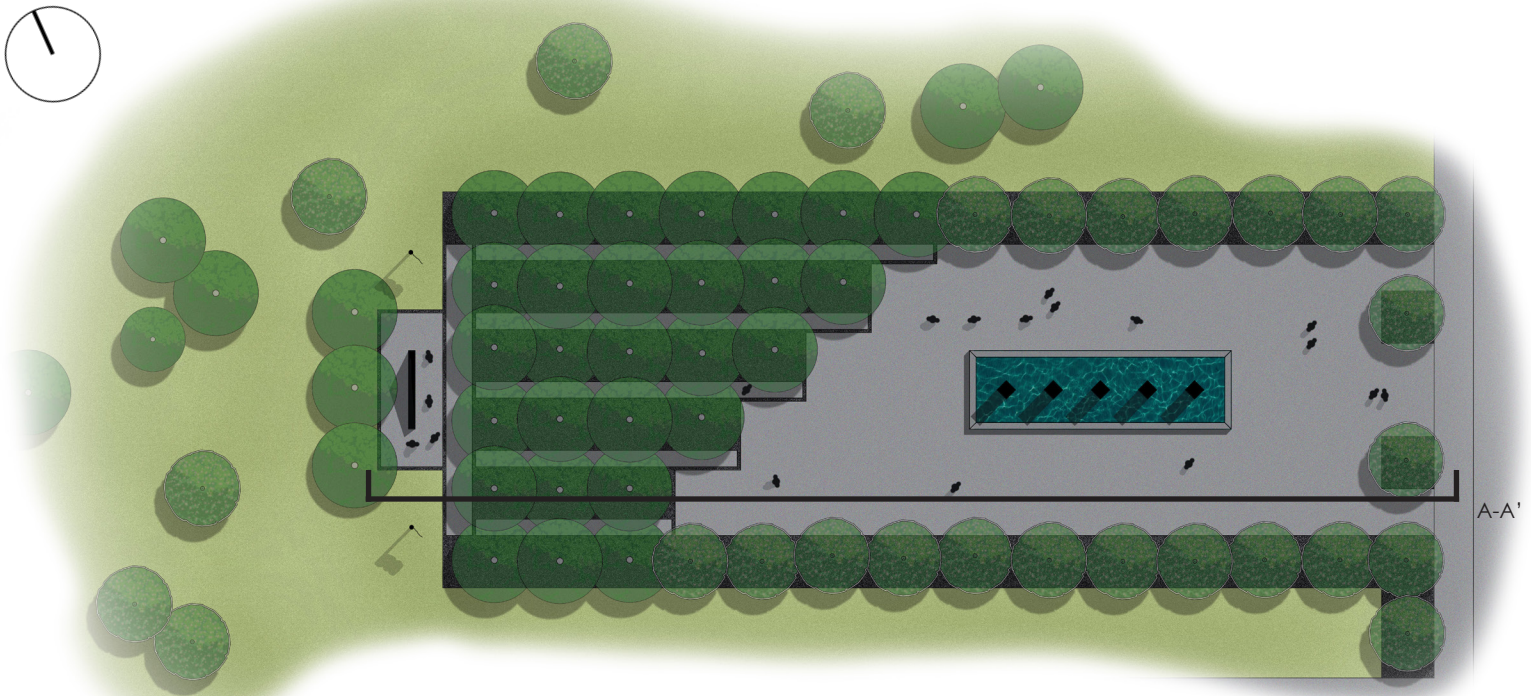
INTEGRITY



COMMITMENT



SITE PLAN - NTS



GOLD STAR MONUMENT

REFLECTION PATHS

ARMED FORCES PILLARS

SECTION A-A' - NTS

# GOLD STAR MEMORIAL

LOGAN HUFFMAN  
LAND 412 | SPRING 2019  
TEXAS A&M UNIVERSITY

GOLD STAR MONUMENT



COMMEMORATIVE PLAQUES



PISTACHE TREE



UNITED STATES AND TEXAS FLAGS



BIGTOOTH MAPLE



KNIFE EDGE COPING



BRUSHED CONCRETE

